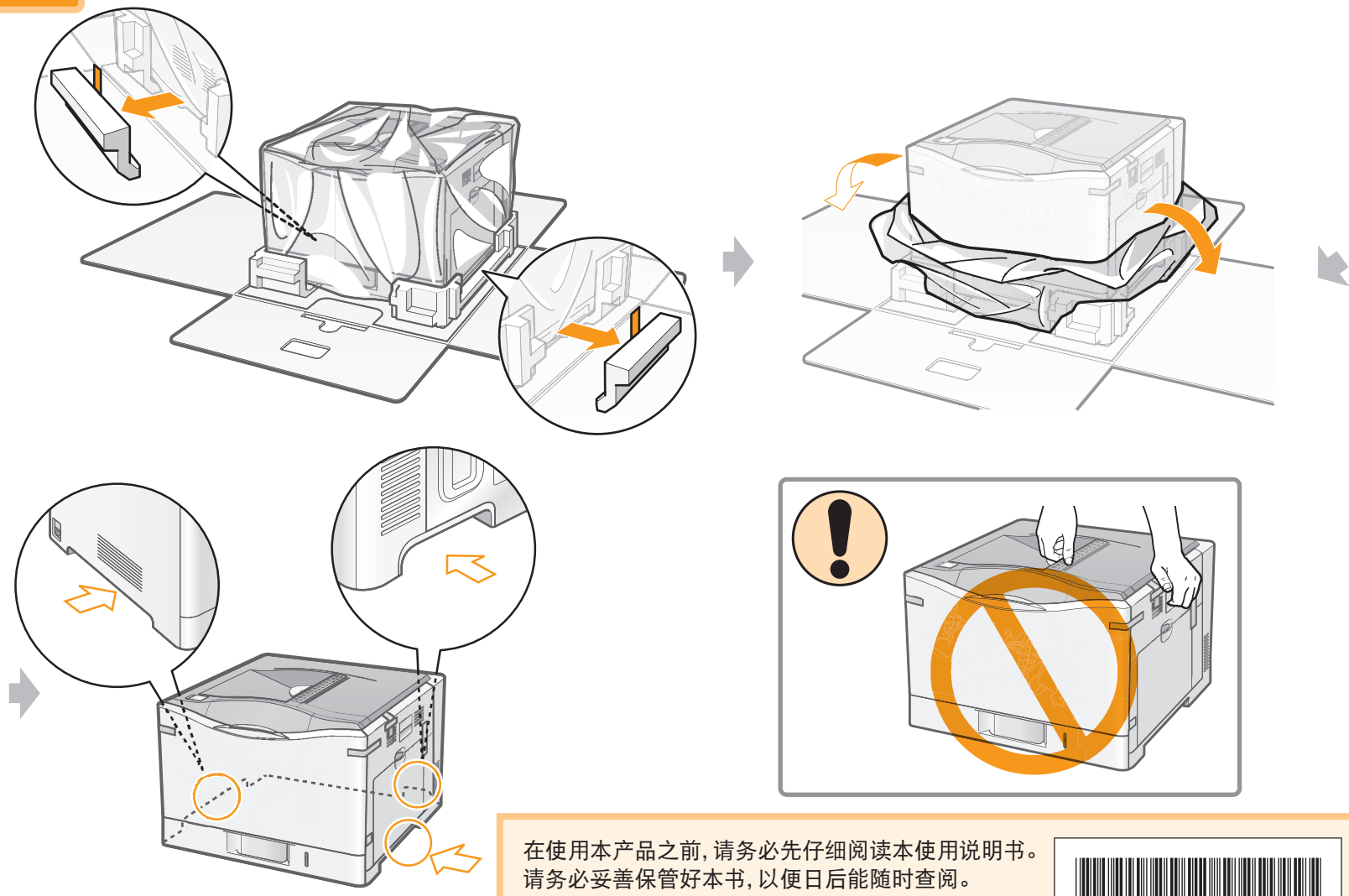
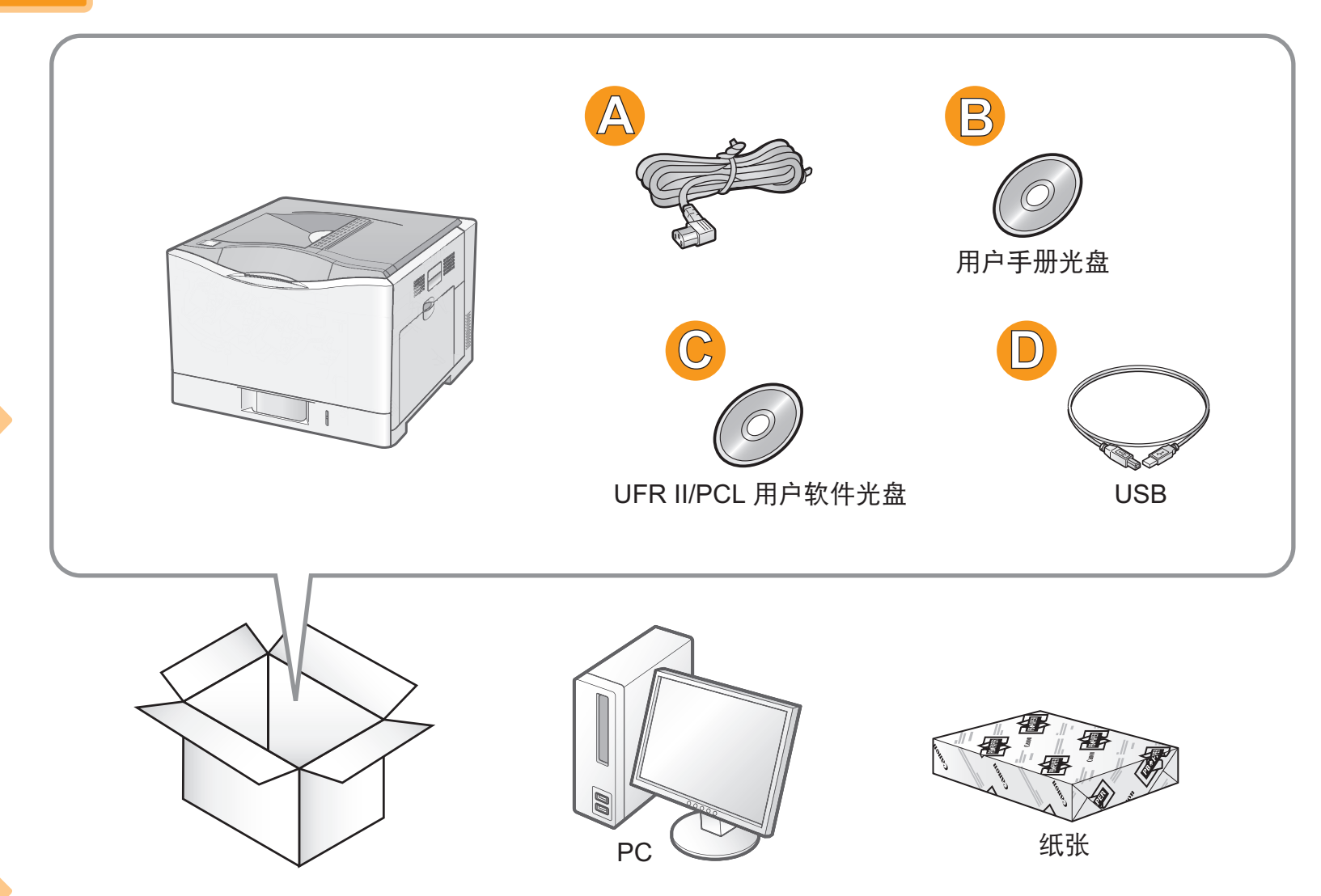


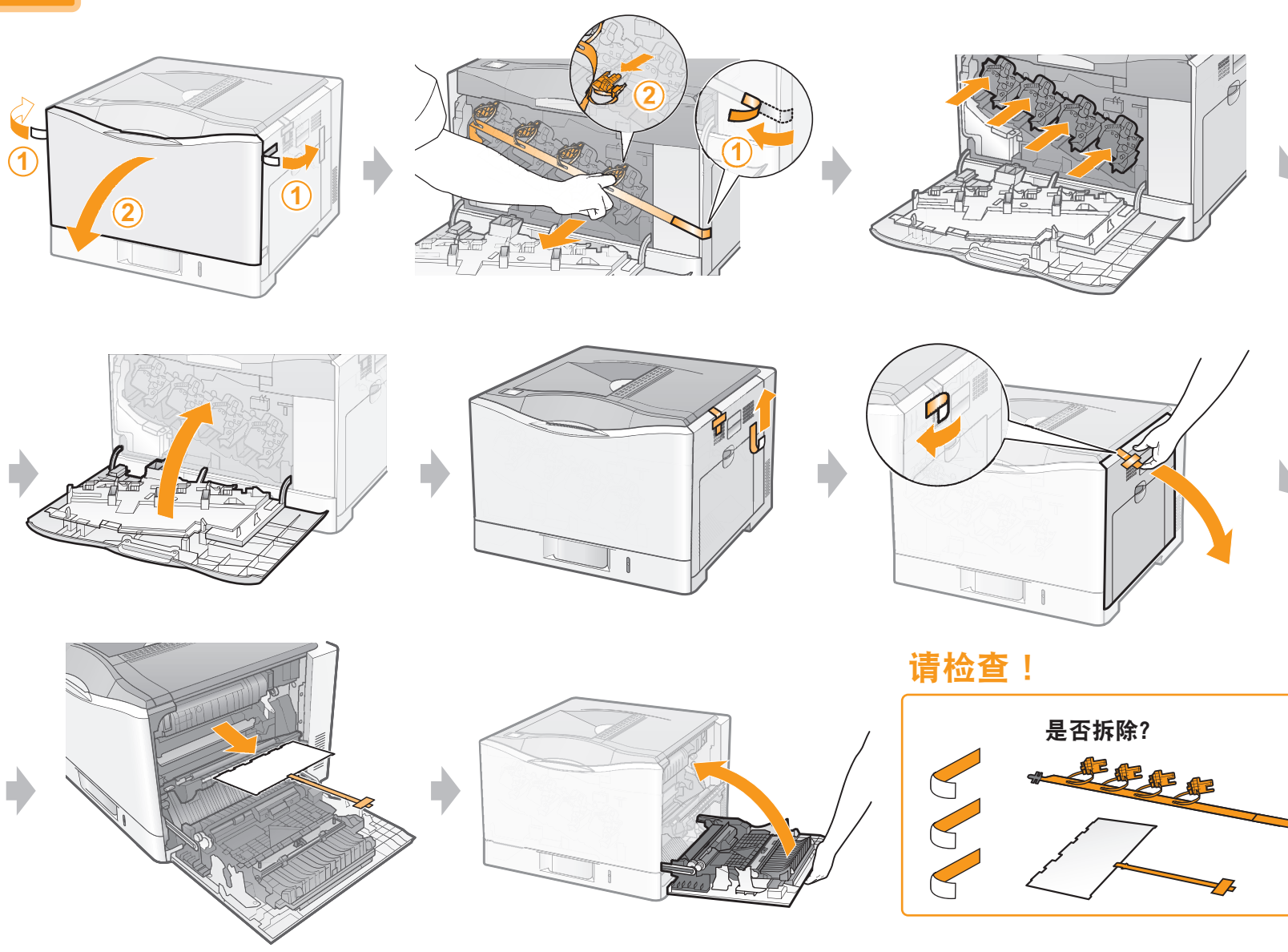
## 1 搬运打印机



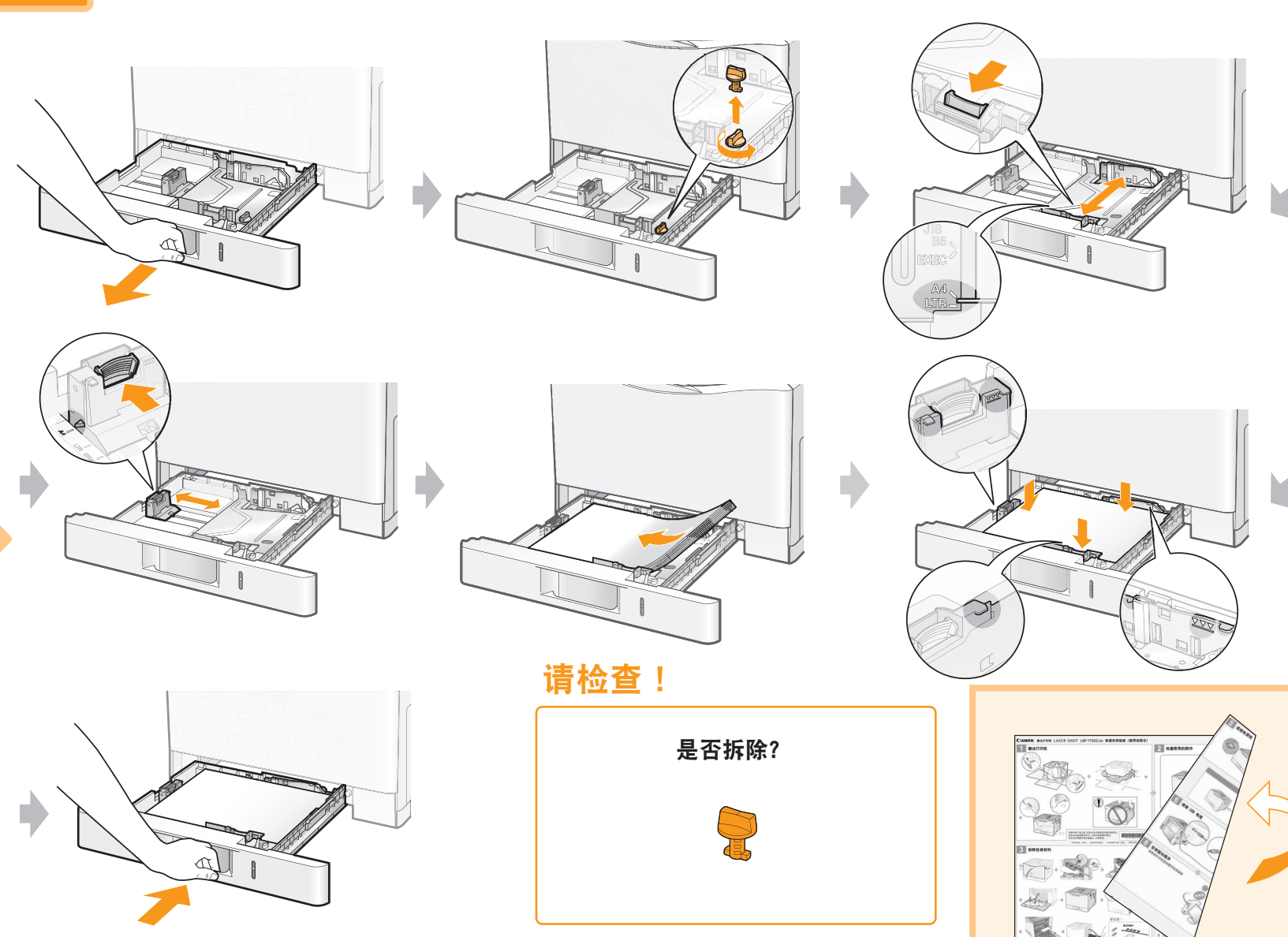
## 2 检查附带的附件



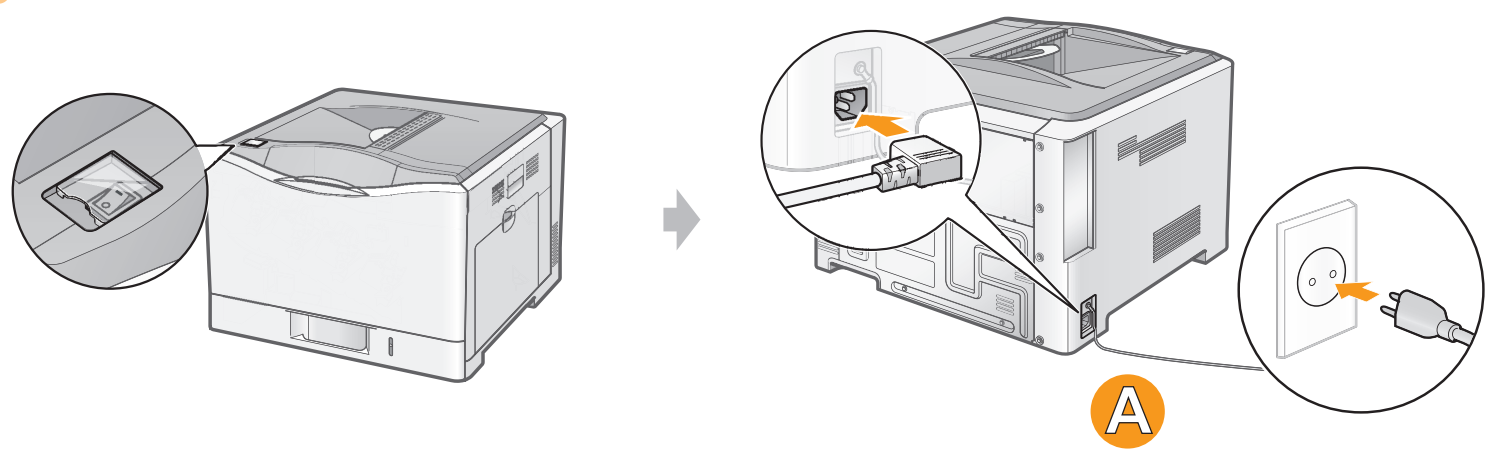
## 3 拆除包装材料



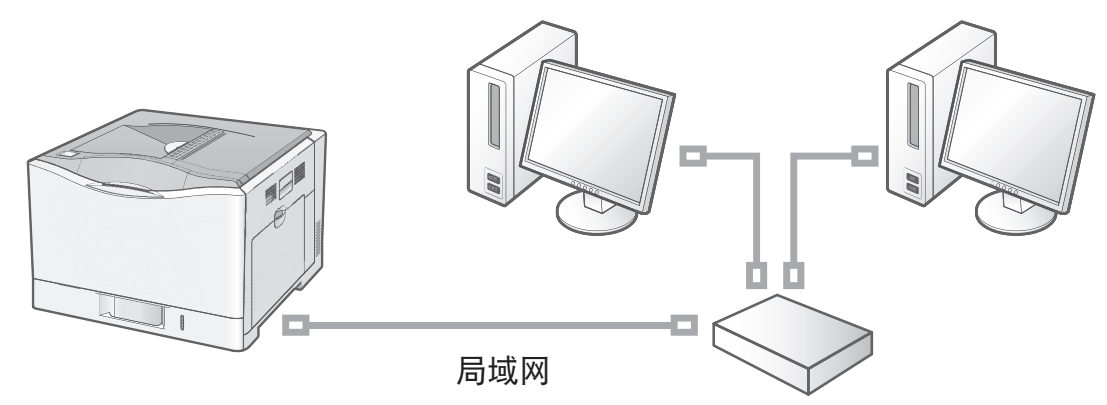
## 4 装入纸张



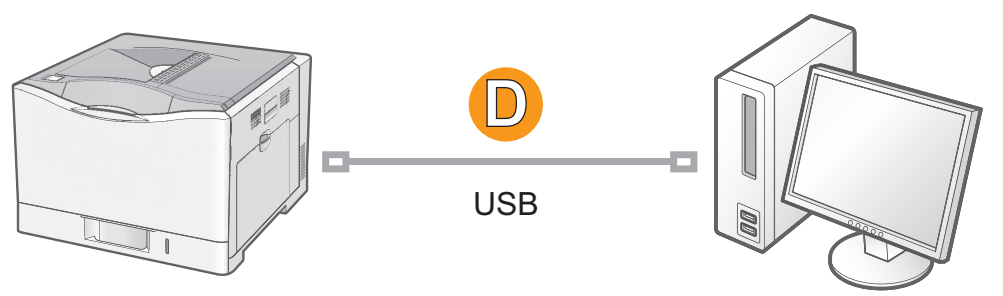
## 5 连接电源线



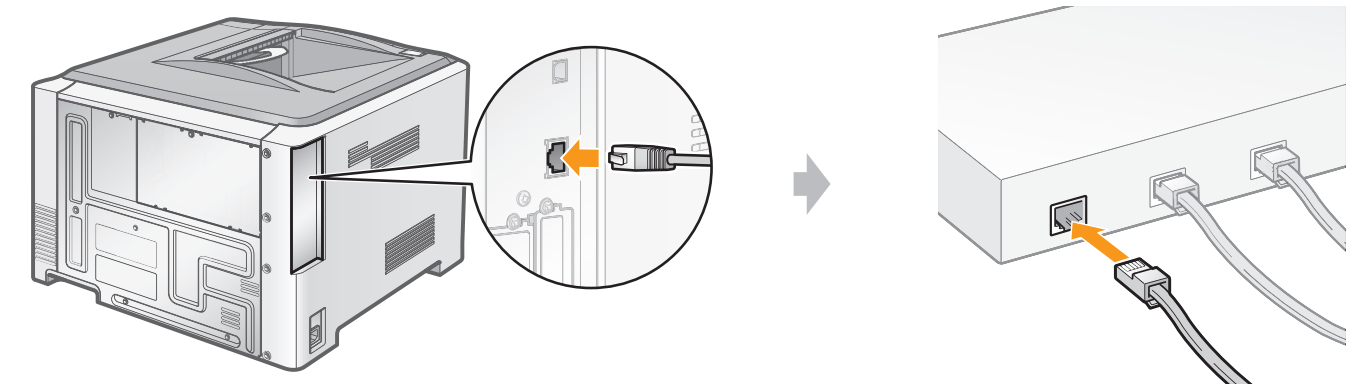
## 使用局域网电缆



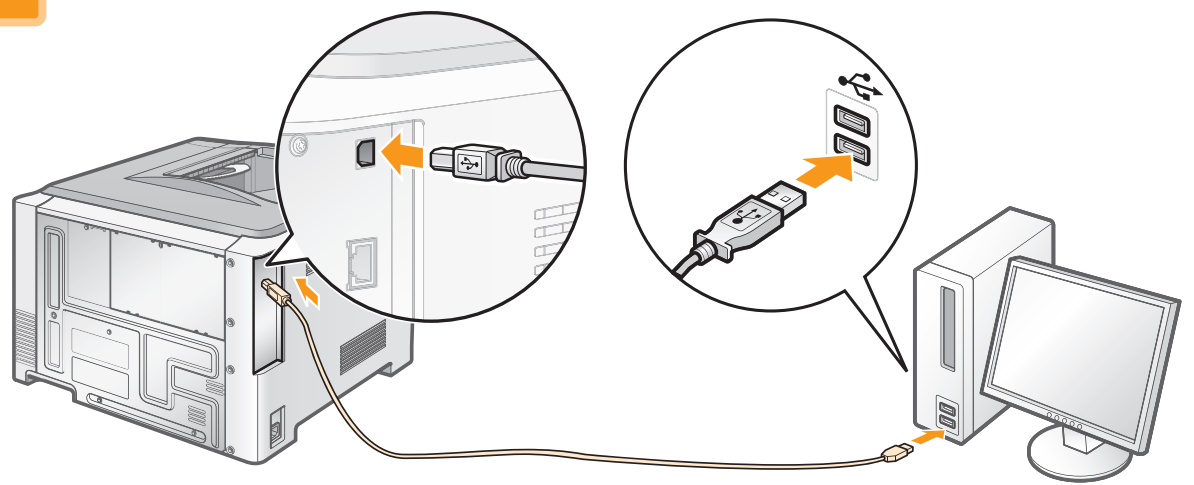
## 使用 USB 电缆



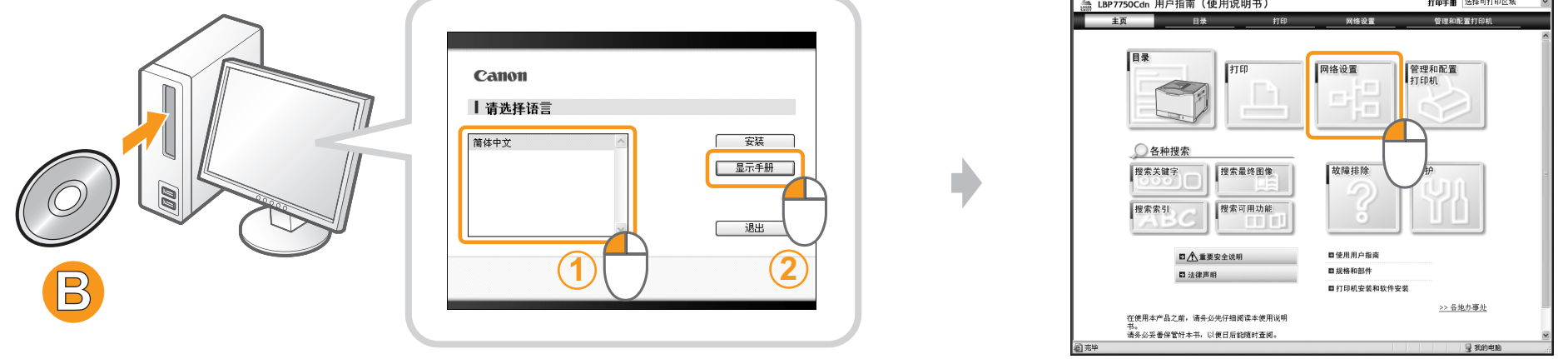
## 6 连接局域网电缆



## 6 连接 USB 电缆



## 7 配置网络设置 请参阅用户指南



## 8 安装驱动程序 请参阅打印机驱动程序安装指南

